

# ATX Power Supply



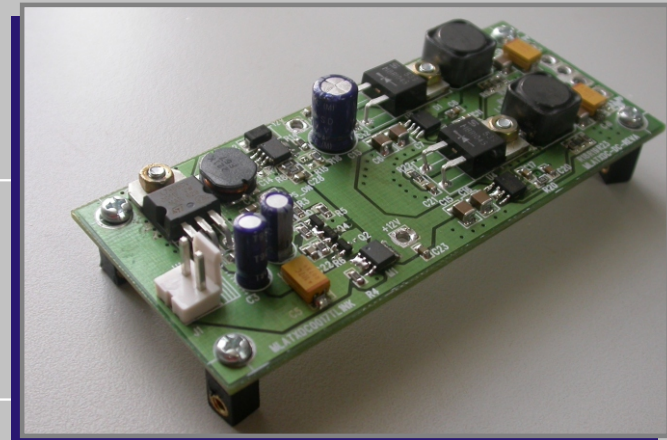
**MicroLOGIX**  
Embedded Controls (P) Ltd.

## Features

- DC Input
- Multiple DC Output
- High Efficiency
- Open Frame Module

## Input Specifications

- Input Voltage Range : 11.8 - 16V DC
- Input Current Range : 0 - 5A



## Output Specifications

- Output Voltages : +5V SB @ 1.5A | +12V @ 1.5A  
: +3.3V @ 4.0A | -12V @ 0.1A  
: +5V @ 4.5A
- Maximum Power : 62.4 Watts
- Load Regulation(10% to 100%) :  $< \pm 1\%$
- Line Regulation(b/w 11.8-16VDC) :  $< \pm 1\%$
- Output V. Tolerance :  $< / = 2\%$
- Ripple /Noise :  $< 20\text{mV P-P}$

## General Specifications

- Switching Frequency : 500KHz
- Efficiency :  $> 90\%$

## Physical Specifications

- Size : 100(W)x45(D)x20(H)mm
- Construction : Open Frame

## Environmental Specifications

- Oper. Temperature : 55 °C
- Storage Temperature : 80 °C
- Relative Humidity : 95%, Non Condensing
- Vibration : 10~500Hz, 2G  
10min./1 cycle

## Control Signals

- PWR\_ON
- PS\_ON

Note :

Additional features can be provided depending on customer requirements (within design limits).