




MicroLOGIX

Smart Electronics for a Connected World


Embedded, IoT Products and Software

Bangalore, India





MicroLOGIX is an Electronics Company having 20+ years of market presence with Focus on Embedded, Internet of Things (IoT), Low Power and Long Range Wireless Networking technologies with Supporting Software and offers Services to Industrial, Medical, Automotive & Defence Markets.



Company Overview



- Established in the year 1997
- State-of-the-art facility spread across 20,000 Sq. Ft. in 4 Floors
- Strong team of 100+ Employees
- R&D and Software Development Team of 15
- Electronic Hardware and Software Design Tools
- Mechanical 2D and 3D CAD Tools



Company Overview

International Standards Certifications:

- **ISO 9001-2015 Quality Management Standard (QMS)**
- **IATF-16949:2018 Automotive Standard**
- **AS9100:2016 Aviation, Space and Defense &**
- **ISO14001:2015 Environmental Management System (EMS)**
- **IPC610 and 620 Certified Resources - Acceptability Standards criteria**
for Electronics and Cable & Wire Harness assemblies

Manufacturing Infrastructure

- Through-Hole and SMD component Assembly
- IPC610 and 620 Certified Manufacturing Resources
- Material Management through ERP Software
- Company-wide ERP System for Efficient Material, Product Data and Finance Management



Markets Served

We have strong presence in the following Market segments



Defense



Automotive



Industrial Automation



IoT



Power Infrastructure



Mobile Telecom Infrastructure



Medical



We offer the following Design Services:

-  **Industrial Design (Mechanical 2D and 3D)**
-  **Hardware Design**
-  **Prototyping**
-  **Firmware and Software Development**
-  **Cloud Connectivity**
-  **Mass Manufacturing of Electronic Products**





Embedded Design Capabilities



Hardware

MicroController Platforms

**ARM CORTEX
(A8, A7)**

**MicroChip
8/16/32 Bit**

**CORTEX M
Series**

Open Source Hardware

Raspberry PI

Arduino

Wired Interfaces/ Protocols

RS232 - UART

**RS485 -
MODBUS**

**ETHERNET -
HTTP, TCP,
UDP**

USB 2.0

CAN BUS

Wireless Interfaces

Wi-Fi

Bluetooth

**ZigBee
(Sub GHz)**





Embedded Design Capabilities

Hardware

Battery Management

Li-Ion, NiMH
Etc.,

Charging
Circuits

Battery Fuel
Gauges

Power Electronics

AC-DC and DC-DC
Modules

Discrete SMPS
Design
(Limited)

Discrete
Switched Mode
DC-DC
Converters

Display / User Interface

7-Segment
Displays

Character LCDs
Graphical LCDs

Capacitive
Touch

PCB Layout

Upto 8 Layers
using Cadence
Allegro

Impedance
Control Design

Differential Pair

Signal Integrity
Compliance





Embedded Design Capabilities Software

Development Tools

KEIL

MPLAB

Operating Systems

Android

Debian

Languages

Embedded C

C++

Python

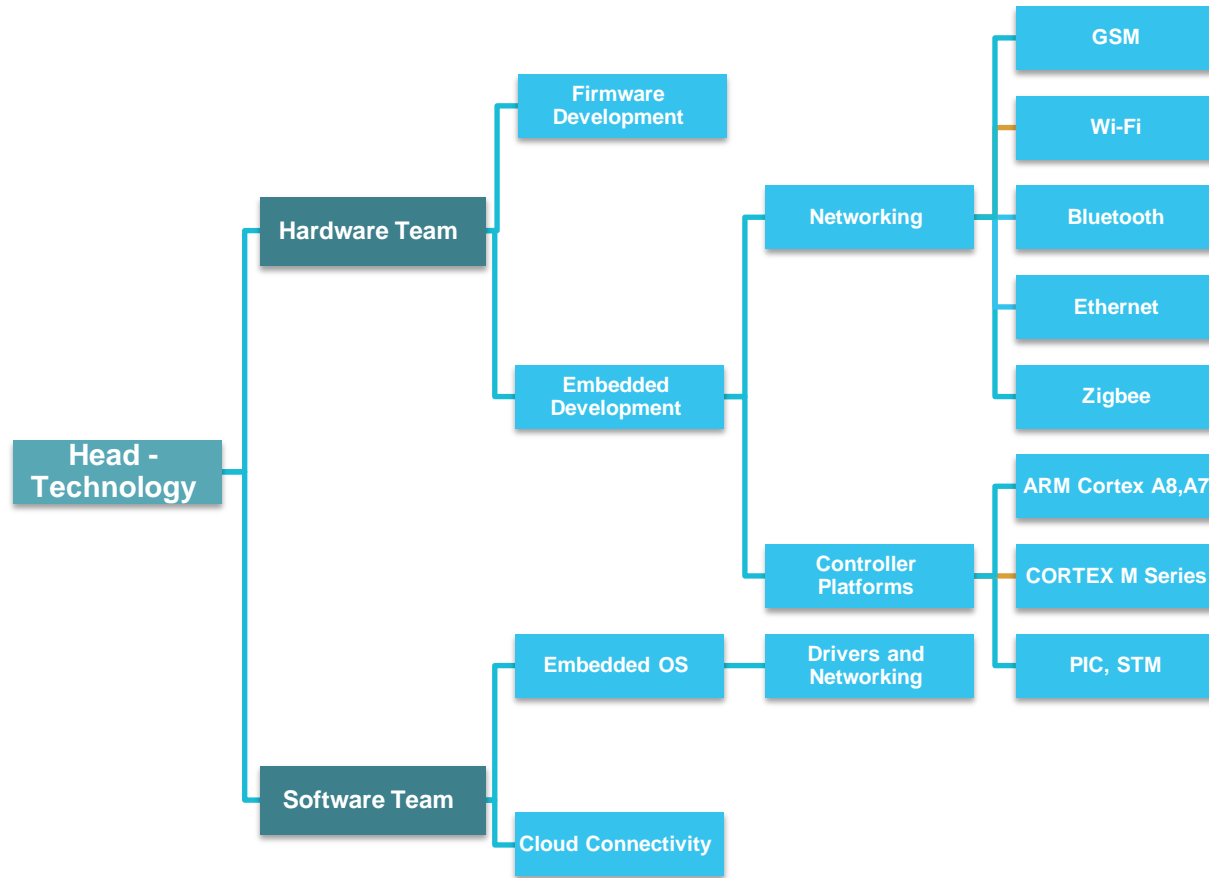
Web Applications

Python

HTML/CSS/JS



Design Team & Technology





Projects / Case Studies



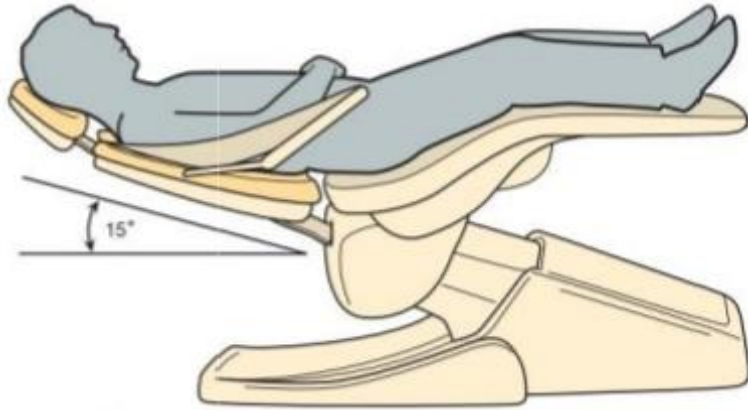


Few Design Case Studies

- ➡ **Dental Chair Movement Controller**
- ➡ **Dental LED Light Controller**
- ➡ **Programmable Operation Theater Table Controller**
- ➡ **IP Power Distribution Unit (IP-PDU)**
- ➡ **ATM/Bank Security System (4G+GPS)**
- ➡ **Portable Toilet Remote Monitoring System**
- ➡ **Wireless BlueTooth Sensors**
- ➡ **Gateway for Sensor Network Systems**



Programmable Dental Chair Controller features



- Chair Up / Down and Backrest Up/Down movement with 24VDC Actuators with Hall Sensor Encoder Position Feedback System
- Keys with 16 Keys (4X4 Matrix)
- Auto Sleep or Power Off System for Higher Reliability
- Programmable Positions and Zero (Flat) Option
- Driving Bi-directional High Current (10Amp+) Actuators to lift 150Kg
- Highly Resistant to EMI and ESD



Dental LED Light Controller

LED Examination Light for Dental Chairs with the following features

- **Microcontroller based Intensity Control System**
- **IR Sensor to detect the Hand Motion to turn on / off the light**
- **Hand Motion to increase or decrease light intensity**
- **Driving a high current LED Lamp through Constant Current LED Driver**
- **Thermal Management**



Programmable Operation Theatre Table Controller features



- 6 Axis Control through Electro-Hydraulic Actuators
- Optical Height Sensor and Rotational Position (Accelerometer) Feedback System
- Keypad with 16 Keys (4X4 Matrix)
- Programmable Positions and Recall Option
- On-board Discrete SMPS 12V-2A
- Highly Resistant to EMI, ESD and Surges



IP Based Power Distribution Unit (PDU)



Ethernet based IP PDU has in-built Energy Meter which measures & transmits the data to Server.

- IP Based Power Distribution Unit (PDU)
- Multiple Power Outlet (Type C13&C19) Options
- Energy Parameters indication in Local OLED Display
- HTTP, SMTP and MODBUS Protocols implemented over Ethernet.
- CAN Bus for Adding Temperature, Humidity, PIR Sensors
- EMI and ESD Protections
- Internal Design for better HV Isolation



Video Based Surveillance System with 4G Modem to transfer the data to server for further analysis



Lobby

Large area of customers traffic requires smooth, high definition video



Security Room

Security Room with multiple cameras for monitoring



Entrance

Clear visibility even in harsh sunlight



ATM

High theft risk location requires constant monitoring

- **Microcontroller based Smart Security System for Banks and ATMs**
- **RF Module to connect to Door, Smoke, PIR and other sensors**
- **Dual 4G Modem with GPS for redundancy**
- **Audio CODEC for Voice Communication**
- **USB Hub to interface to SBC**
- **High Reliability built-in using EMI, ESD, Short-circuit & Overload Protections**



Gateway

High Performance Gateway features

- **RF Interface:** Wi-Fi, Zigbee, GSM, Bluetooth
- **Wired Interface:** Ethernet, UART, MODBUS
- **IoT Protocol:** MQTT
- **Networking Protocols:** HTTP, DHCP, TCP/IP
- **Cloud Platform:** Google Cloud
- **Webpage and App Interface for Configuration**



Cloud Connectivity

MicroLOGIX offers cloud connectivity with

➡ Google Cloud



Google Cloud Platform



➡ MQTT, HTTP, TCP/IP Communication Protocols

➡ Email Alerts: Mailjet

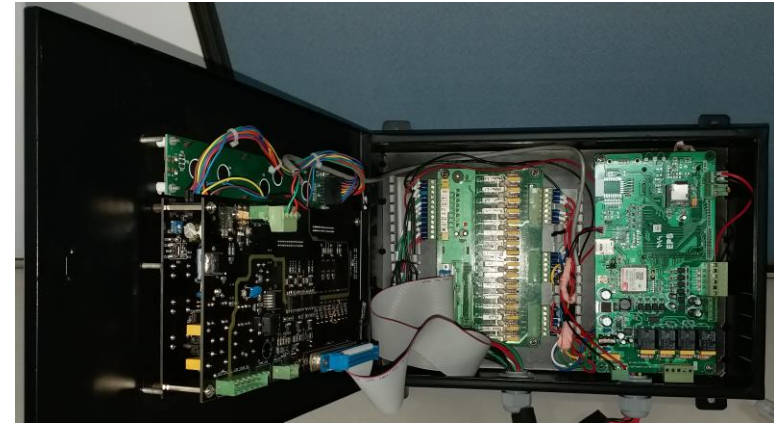


➡ SMS Alerts: Twilio



Portable Toilet Remote Monitoring

Project	Description	Scope
Easy Public Sanitation (EPS) ^{SEP}	Portable, Modular Electronically Controlled Toilet	Electronically Controlled Toilet, Cloud Connected for Remote Management and Control, Data Collection, Website Interface, Admin and Maintenance Console





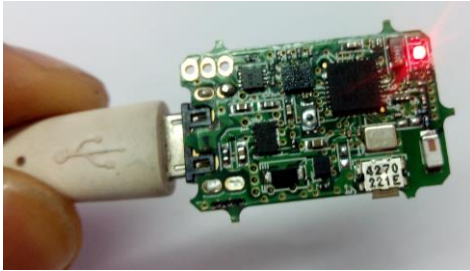
Other IoT Projects

Project	Description	Scope
Spider (Sensor Module with Zigbee Wireless)	Sub GHz Zigbee Sensor Gateway : Bluetooth, WiFi, GSM, RS485 connectivity with Multiple Protocols	Design, Tooling, Networking, Manufacturing, Testing and Shipping
FIND - Bluetooth Asset Tracker with Android App	Tracks assets using Bluetooth technology using Android App	Global Sourcing, Manufacturing, Testing and Shipping
Bluetooth Sensor	Environment Sensing with Temperature, Humidity, Vibration and Gyro Sensors	Global Sourcing, Manufacturing, Testing and Shipping



Projects - Gallery

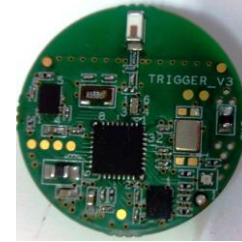
BlueTooth Vibration and Temperature Sensor



FIND - Asset Tracker



BlueTooth Sensor



Zigbee Sensor



Industrial Dryer Controller



Cabinet Cooling Fan Tray Controller



Projects - Gallery

Industrial Controller



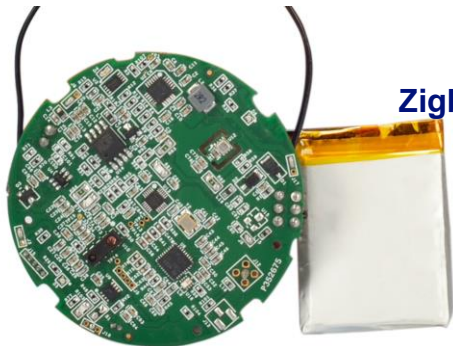
Home Automation Control PCB



Lubrication Controller



Zigbee Wireless Sensor





Automotive Customers

- 1. Agile Electric, Chennai**
- 2. Eberspaecher Sutrak (Germany), Bangalore**
- 3. India Japan Lighting (P) Ltd., Chennai**
- 4. GlobalEdge Software, Bangalore**

Automotive Customers

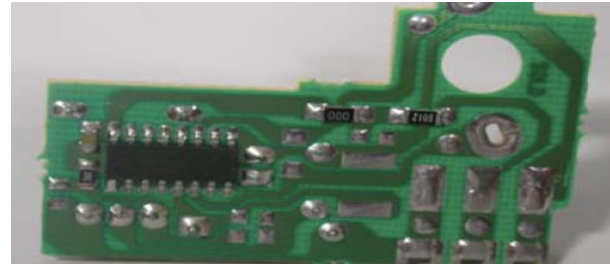
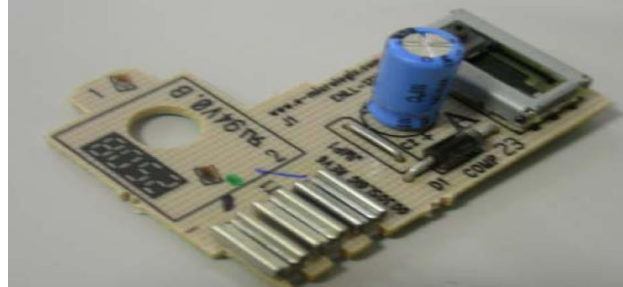


Igarashi Motors (I) Ltd.,

- Japanese Company located in MEPZ, Chennai
- Head Lamp Leveling PCB Assemblies
- 3 Models - External 12V, External 24V and Internal 12V
- High Volume Production - Projected to go up to 1 Mn units
- Supplies go to all major OEM Customers - Visteon, NeoLite, Lumax and Autolight
- Passed stringent standards established by IMIL

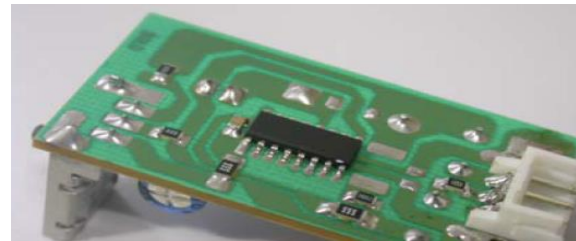
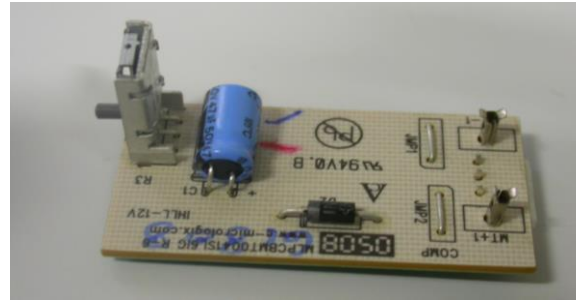
Automotive External HLL EHLL-12V

 **IGARASHI**
MOTORS INDIA LTD.



Automotive Internal HLL-12V

 **IGARASHI**
MOTORS INDIA LTD.



Automotive Customers



- **Eberspaecher (Carrier Transicold)**
 - Truck and Bus Air-conditioning Cabin Control Unit
 - Air-conditioning Control Relay Panels (4 Models)
 - Blower Speed Controller (Single/Dual Spindle 24V/20Amps)
 - Battery-less Alternator Assembly
 - Electronic Engine Control Panel (Under Development)

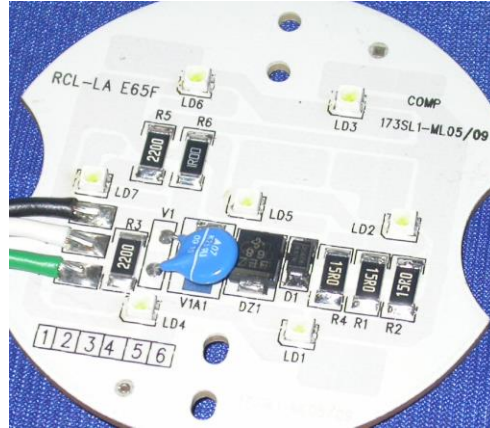
Automotive Customers



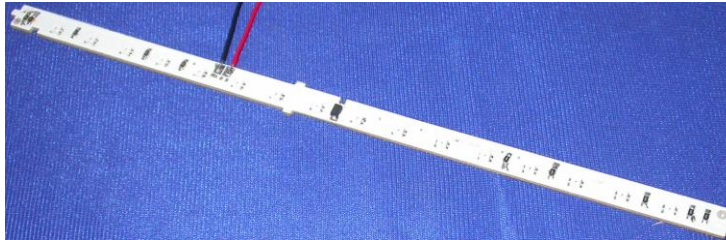
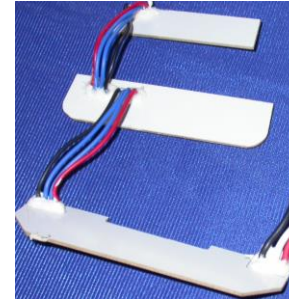
- Automotive AC Controls
- Mounted in Dash Board
- Temperature Control
- Blower Speed Control
- Heating and Cooling
- Host of Other Options



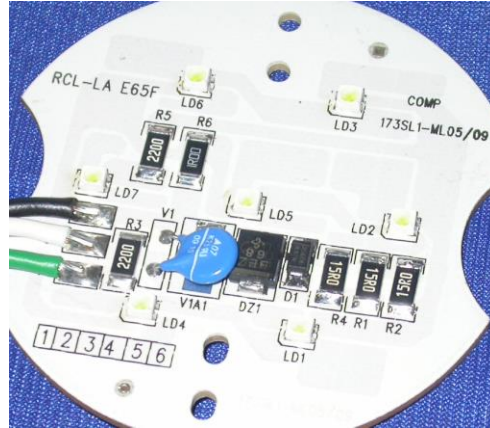
Automotive LED Light PCBAs



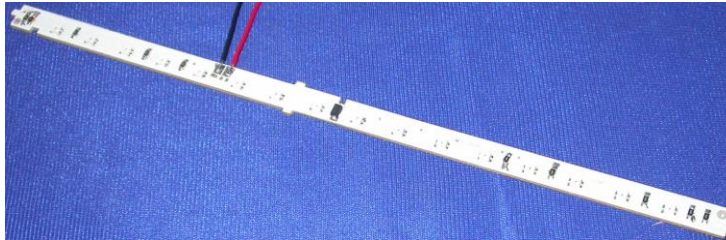
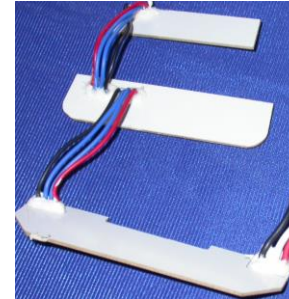
- LED Tail Lights for 2 Wheelers
- High Mount Stop Lamp (HMSL) for 4 Wheelers
- Interior Lights for 4 Wheelers



Automotive LED Light PCBAs for 4 Wheelers

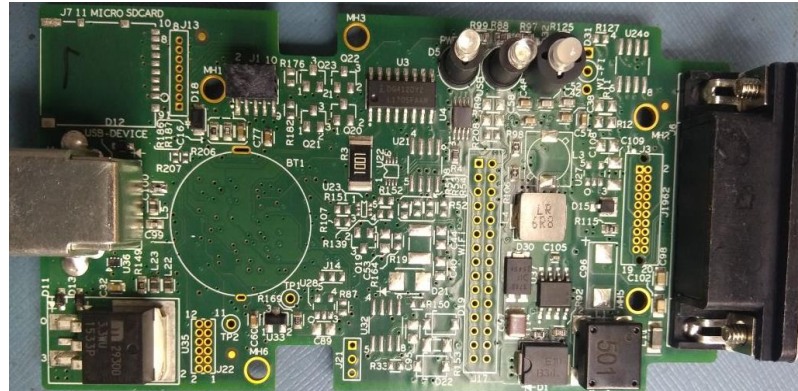


- LED Tail Lights for 2 Wheelers
- High Mount Stop Lamp (HMSL) for 4 Wheelers
- Interior Lights for 4 Wheelers



Automotive Customers

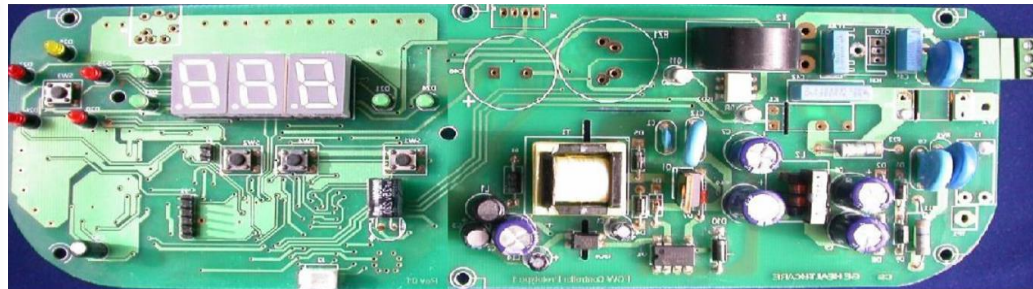
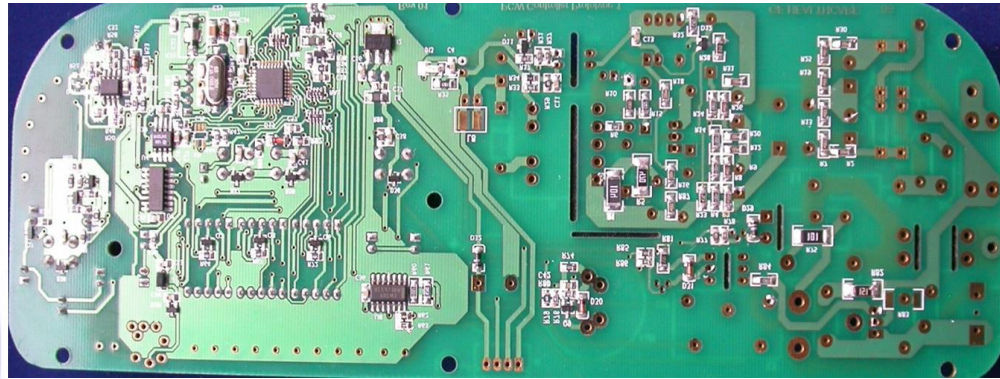
GLOBAL EDGE
Intelligence Of Things®

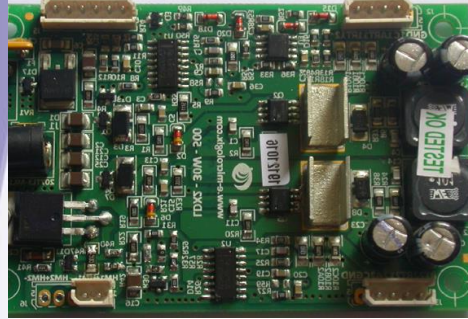
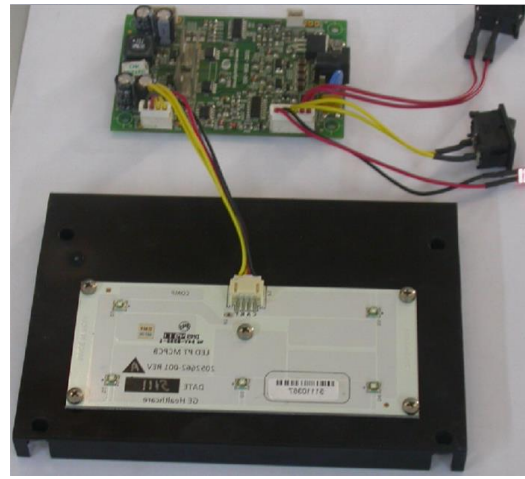


In-Vehicle Communication Controller

GE Healthcare, India

SI No	Project	Scope	Status
1	Infant Photo therapy Control Development	Design, Engineering, Reliability Testing and Manufacturing	In Production
2	Infant Warmer Control Development	Design, Engineering, Reliability Testing and Manufacturing	In Production





Eberspaecher, Germany

SI No	Project	Scope	Status
1	Bus Climate Control (3 Models)	Design, Engineering, Manufacturing	In Production
2	Control Panels for Bus Climate Control (3 Models)	Design, Engineering, Manufacturing	In Production



Bharat Electronics, India

SI No	Project	Scope	Status
1	Navy Ship Sonar Power Supplies	Design, Engineering, Simulation Mechanical Fabrication, Manufacturing, EMC and ESS/ET	In Production
2	Navy Ship Sonar Display Cabinets	Design, Engineering, Simulation, Mechanical Fabrication, Manufacturing, EMC and ESS/ET	In Production
3	Navy Ship Sonar Processor Cabinets (VME Cages)	Design, Engineering, Simulation Mechanical Fabrication, Manufacturing, EMC and ESS/ET	In Production
4	Submarine Power Distribution Panel	Design, Engineering, Simulation Mechanical Fabrication, Manufacturing, EMC and ESS/ET	In Production



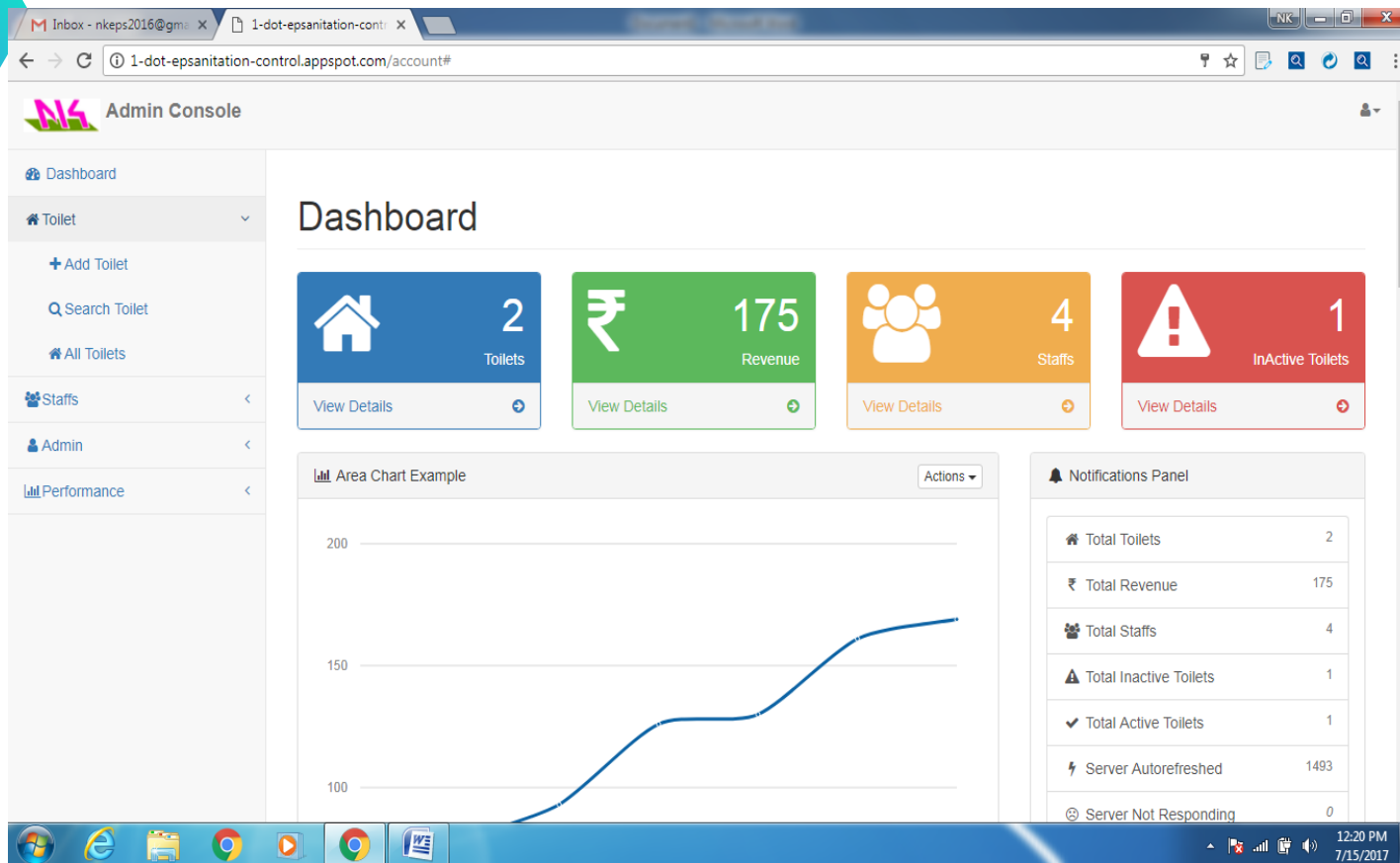
Other IoT Projects

Project	Description	Scope
IP Based Power Distribution Units (IP PDUs)	Ethernet and Wi-Fi Connected PDU with CAN Bus Interface for Energy Metering, Sensing and Intrusion Prevention. Works on Wired or Wi-Fi with SMTP Protocol	Hardware and Embedded Software, Embedded Web Server Development with Web Pages to show the Data, Local OLED Display Based Development
Fan Tray Controller	To Sense the Temperature Inside the 4G Baseband Towers and Cool them with Speed Controlled Fans. RS485 MODBUS to communicate the status	Hardware and Embedded Software Development, LED Display, Keypad Design

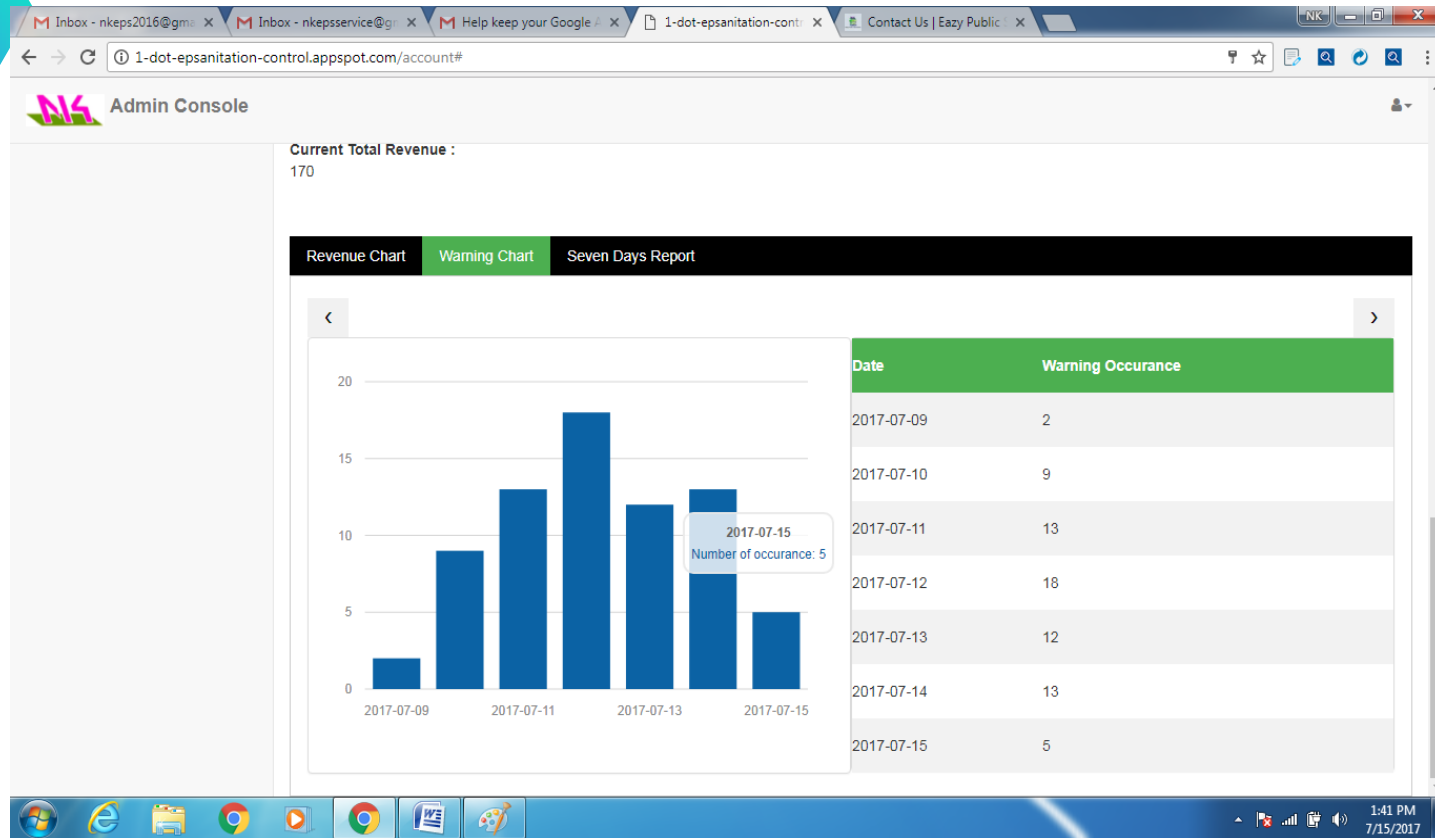
Other Projects

Project	Description	Scope
Power Distribution Units (PDUs)	Ethernet and Wi-Fi Connected PDU with CAN Bus Interface for Energy Metering, Sensing and Intrusion Prevention. Works on Wired or Wi-Fi with SMTP Protocol	Hardware and Embedded Software, Embedded Web Server Development with Web Pages to show the Data, Local OLED Display Based Development
Fan Tray Controller	To Sense the Temperature Inside the 4G Baseband Units and Cool them with Speed Controlled Fans	

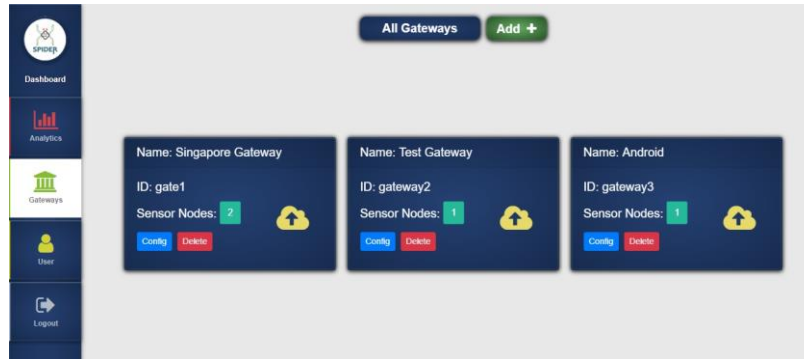
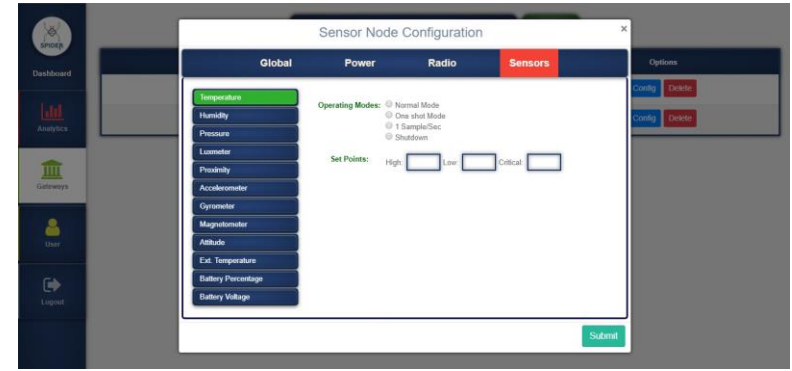
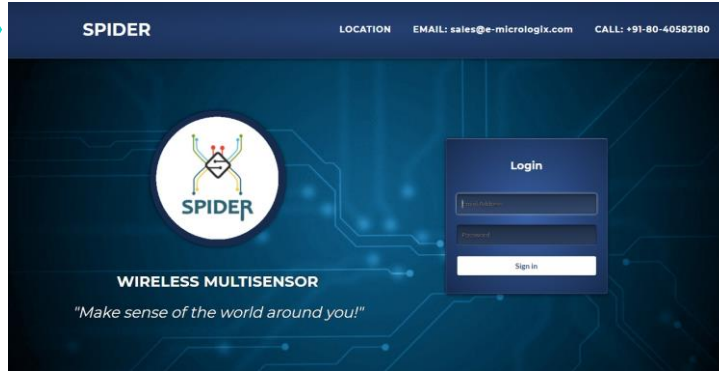
Website - Dash Board



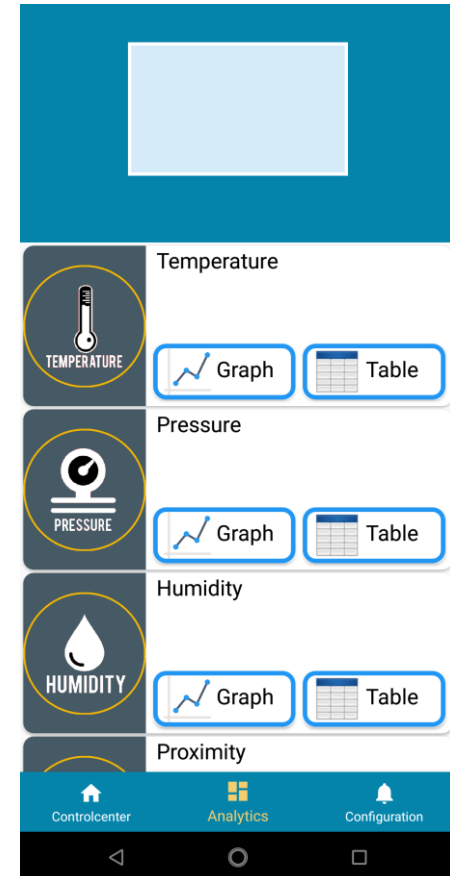
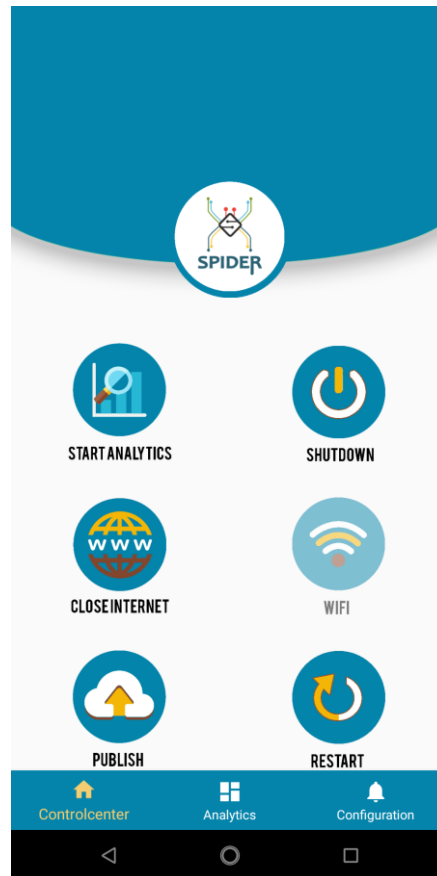
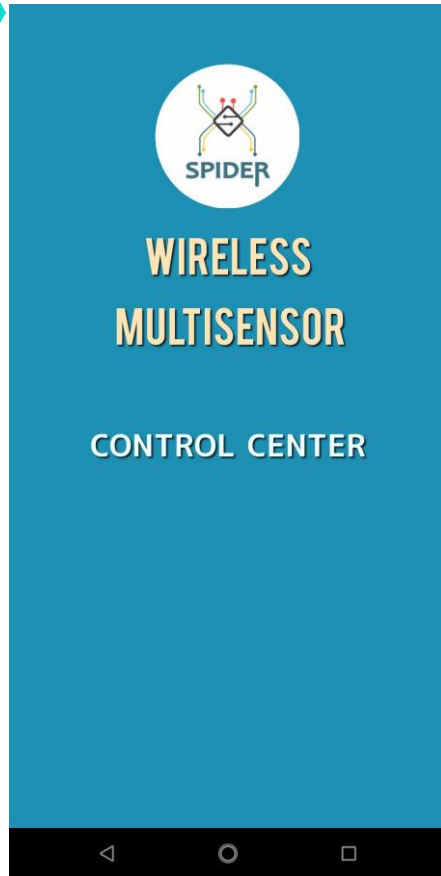
Website - Admin Console



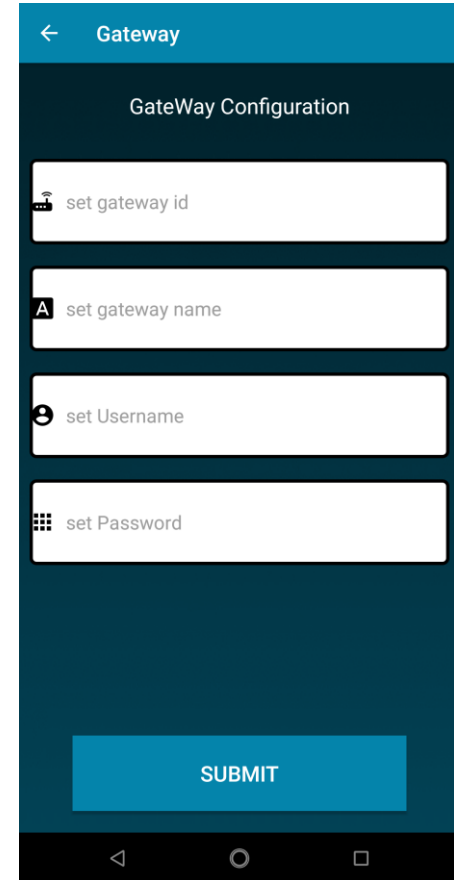
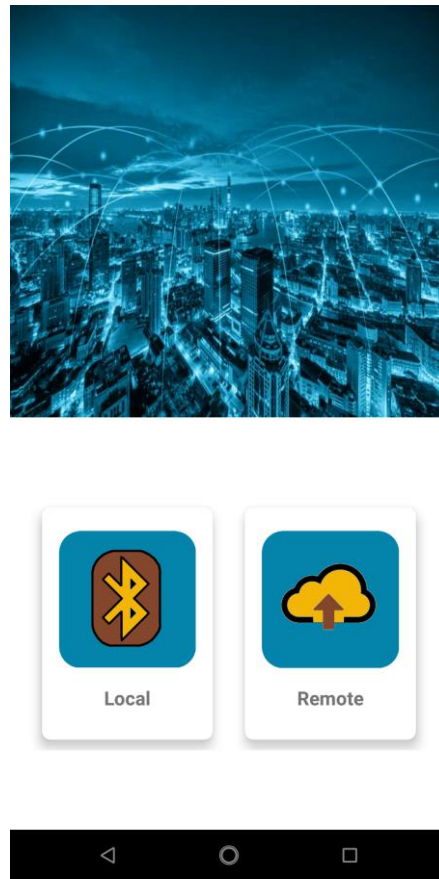
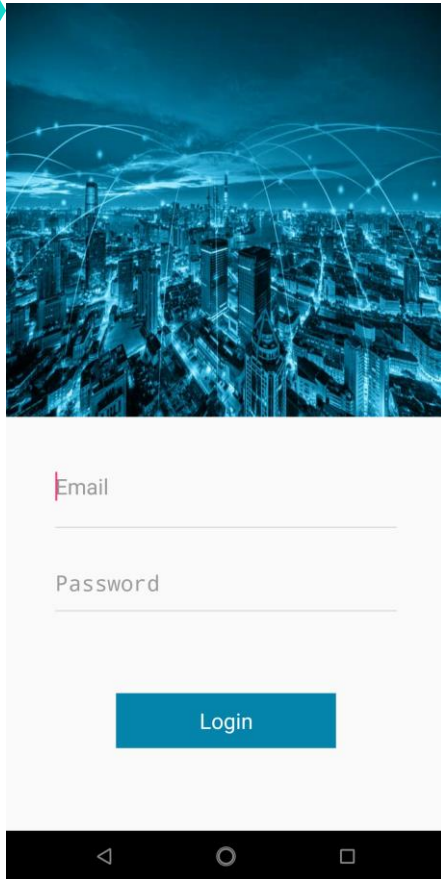
Website - Spider Sensor



Android Mobile App - Spider Sensor



Android Mobile App - Spider Sensor



Thank You!

MicroLOGIX

**473D, 13th Cross, 4th
Phase, Peenya Industrial
Area, Bangalore - 560058,
India**

Website : www.e-micrologix.com

Phone : +91 80 - 41272180 - 83

Email: sales@e-micrologix.com