

Product Summary

This Low Power, Sub-GHz Zigbee based Wireless Multi Sensor can be used for plethora of applications. This portable device is powered with either Battery or an external Adapter. Sub-GHz wireless radio provides long range and wall penetration besides consuming ultra-low power. This product senses complete environment and pushes the data to cloud through a high-performance, multi-interface Gateway. Data Analytics and Visualisation is done on Google Cloud Platform with E-mail and SMS notifications.

Applications

- Home and Building Automation
- Wireless Sensor Networks
- Alarm and Security
- Lighting Control
- Medical
- Remote Controls
- Machine Monitoring
- Sports and Fitness Equipment
- Asset Monitoring/Tracking



Features

- MEMS Microphone for Voice Application Support
- Hall Effect Sensor
- Indoor Air Quality Sensor for Co2 & other gases sensing
- Highly Accurate Temperature Sensor
- 6 Axis Accelerometer and Gyro for Movement & Vibration Sensing
- Humidity Sensor
- Barometric pressure and True North Sensing for Compass
- LED's to indicate Battery and other Status
- -20 TO +85 C Operating Temperature
- Optional PIR Sensor requires a different enclosure
- Web Application with Cloud database
- 256KB Flash Memory for Storage of Sensed parameters in the event of Gateway disconnection

Specifications

Sensors

Type	Range	Accuracy
Accelerometer	±16g	—
Gyroscope	±2000°/s	—
Magnetometer	—	—
Temperature	- 40 to 150 deg C	0.75 C
Humidity Sensor	0 to 100% RH	0.008% RH
Hall Effect Sensor	—	—
PIR Sensor	2 ¹⁴ - 511 Counts	—
UV / Ambient Light Sensor	Upto 128KLX dynamic range	<100 mlx resolution
Indoor Air Quality Sensor	ECO2= 400ppm to 64000ppm TVOC=0ppb to 64000ppm	0.18Pa
MEMS Microphone Sensor	90db	—

Zigbee Wireless Radio

Frequency Range	868 MHz
Output Power	+16dBm
Receiver Sensitivity	-123dBm at 1.2 kbps
Modulation Formats	4-GFSK, 2FSK, 4FSK
Max. Data Transfer Rate	1250kbps

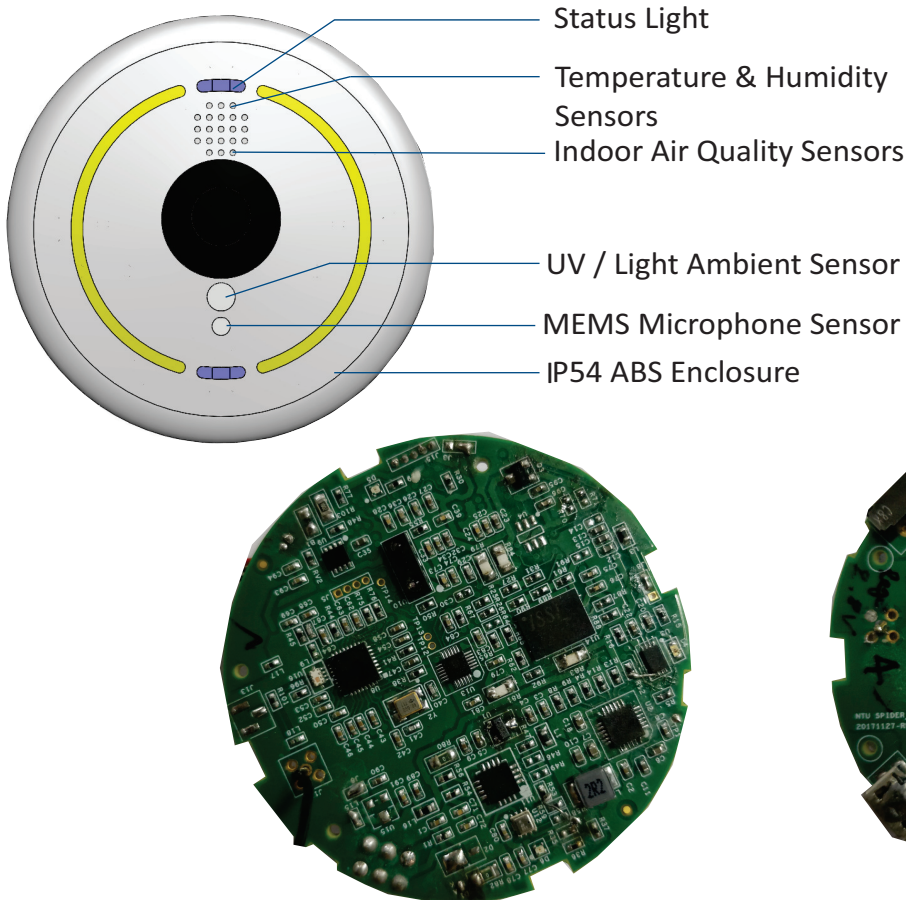
Power Source (Only One as Selected by Customer)

Type	Description
Coin Cell Battery	3.6V Battery, 560mA
Li-Ion Battery	Rechargeable Li-Ion Battery 1000mAH
USB	USB Power Source - 5V

Spider

Zigbee Wireless Multi-Sensor

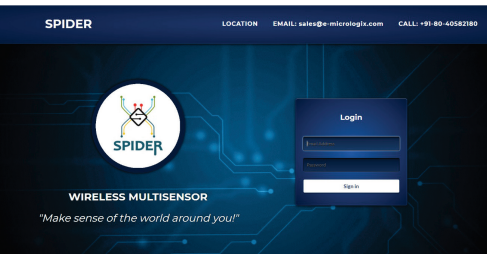
Parts of Spider



Enclosure

Dimension	60mm Dia X 20mm Thick
Material	Polypropylene(PP)
Mounting	Magnet, Velcro 3M Adhesive Tape

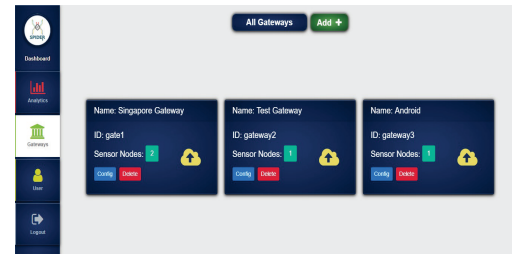
Web Application



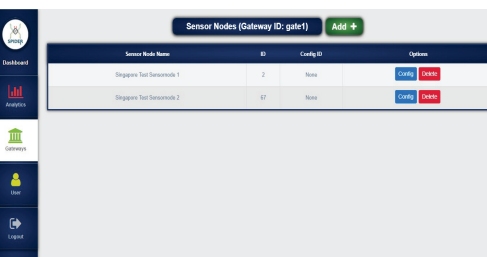
Home Page



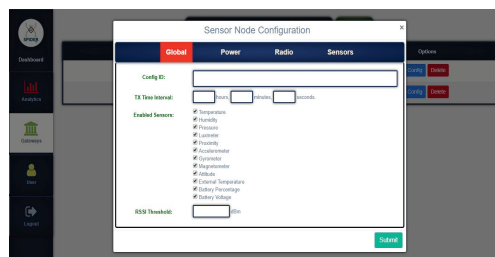
Analytics Tab



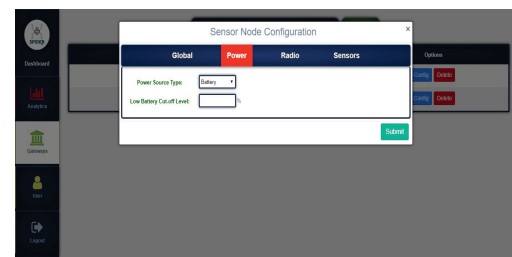
Gateways Tab



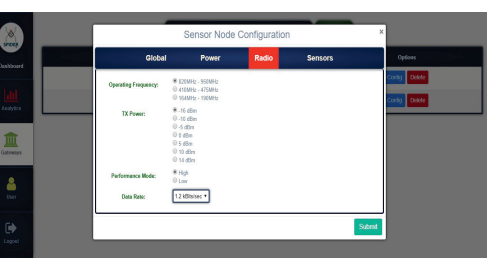
Sensor Node List



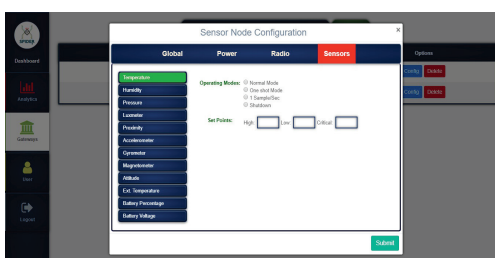
Sensor Node Configuration - Global



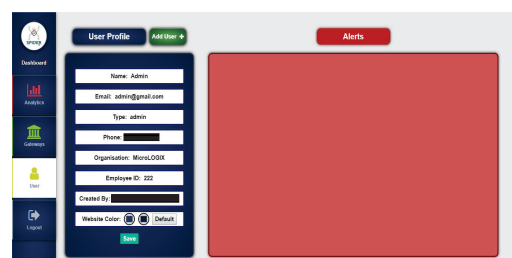
Sensor Node Configuration - Power



Sensor Node Configuration - Radio



Sensor Node Configuration - Sensors



User Tab

Contact : **MicroLOGIX**

473D, 13th Cross, 4th Phase, Peenya , Bangalore-560 058, India
Ph : +91-80-40582180-84, E-mail : sales@e-micrologix.com